

# GRESHAM ST PAUL'S

Floor plans

# GROUND FLOOR PLAN

Office (sq ft)

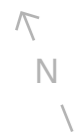
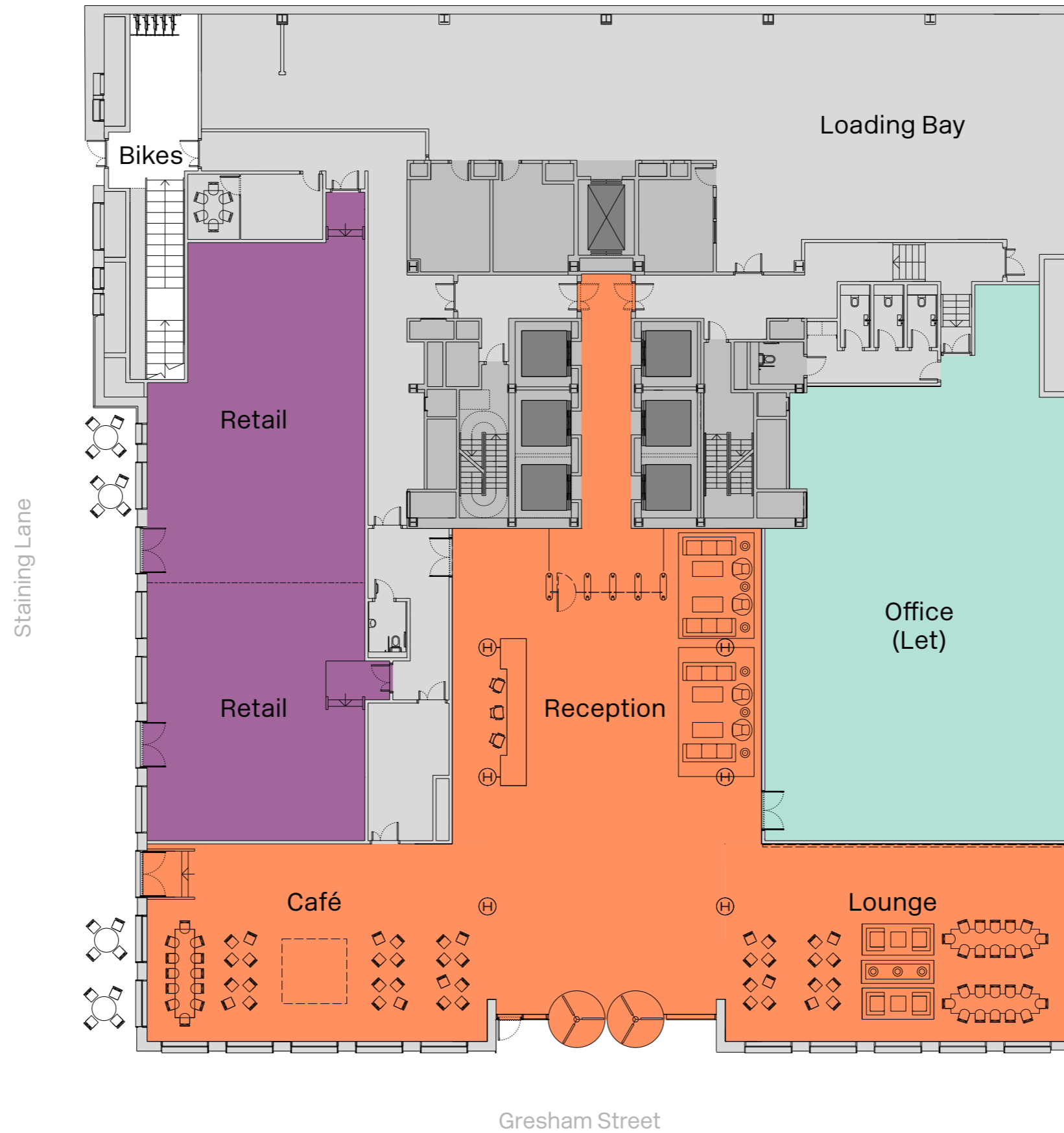
## LET

Retail (sq ft)

## 2,950

Reception & café (sq ft)

## 6,205

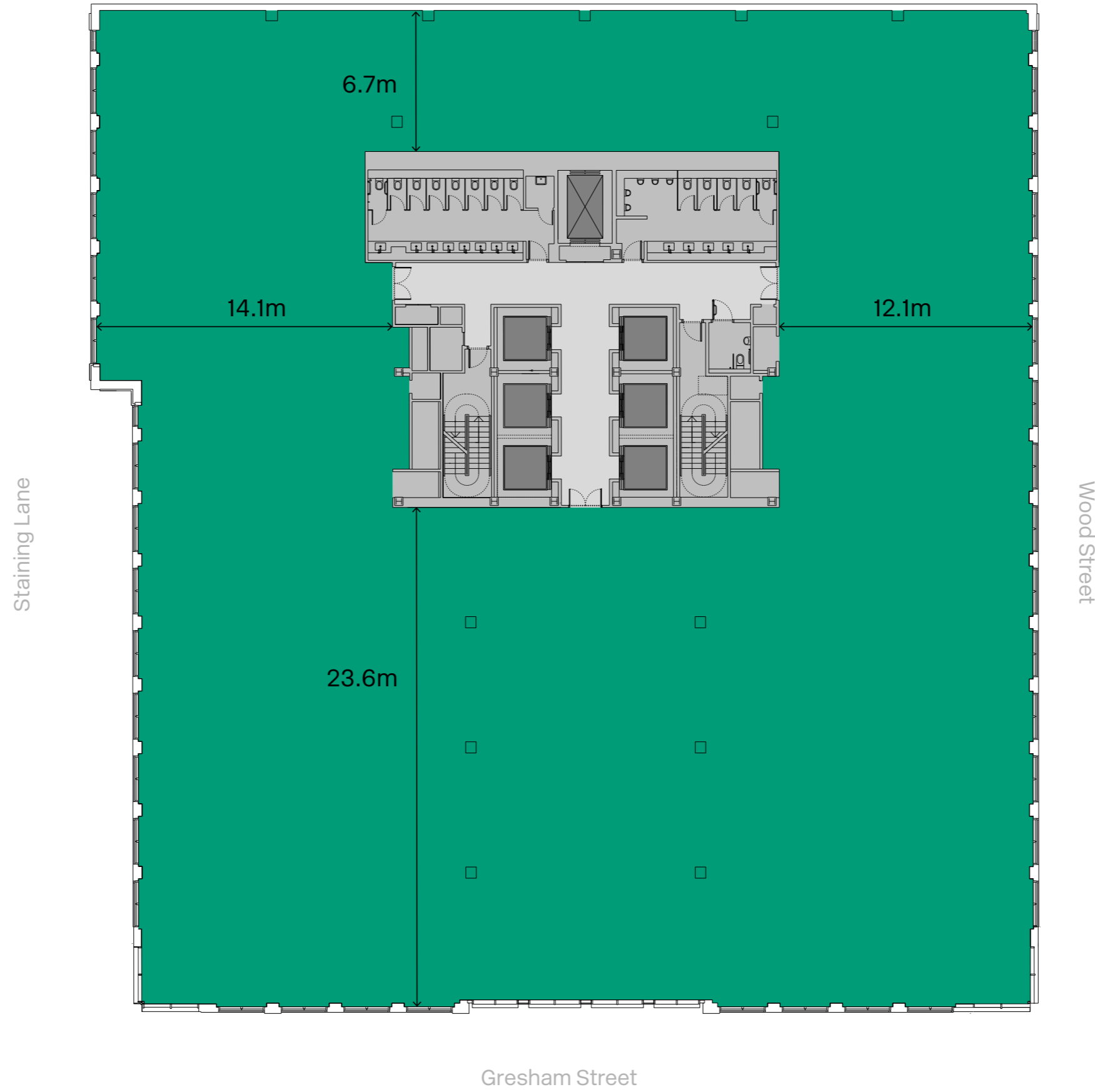


- Office
- Retail
- Reception, Café & Lounge

# SIXTH FLOOR TYPICAL OFFICE

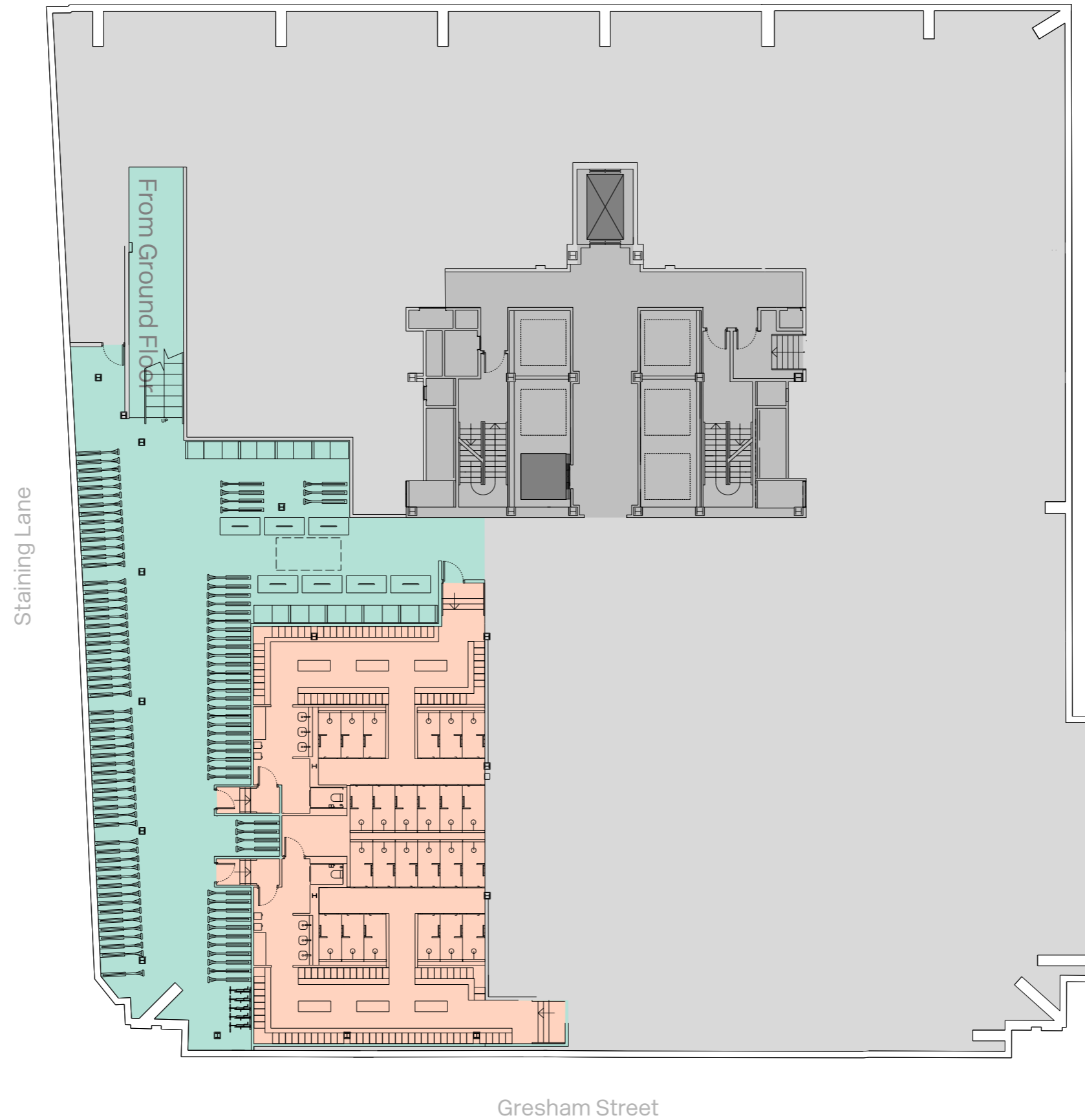
Office (sq ft)

## 18,807



● Office

# LOWER GROUND FLOOR PLAN



| Amenities   |              |
|-------------|--------------|
| bike spaces | 29 remaining |
| lockers     | 29 remaining |
| showers     | 25           |

- Bike store
- Changing rooms